

KOMATSU

myFleet

Fleet management made easy



What is myFleet?

myFleet is Komatsu's customer fleet management platform. myFleet is an addition to the myKomatsu self-service portal and simplifies the way you access and view your machine data and reports.

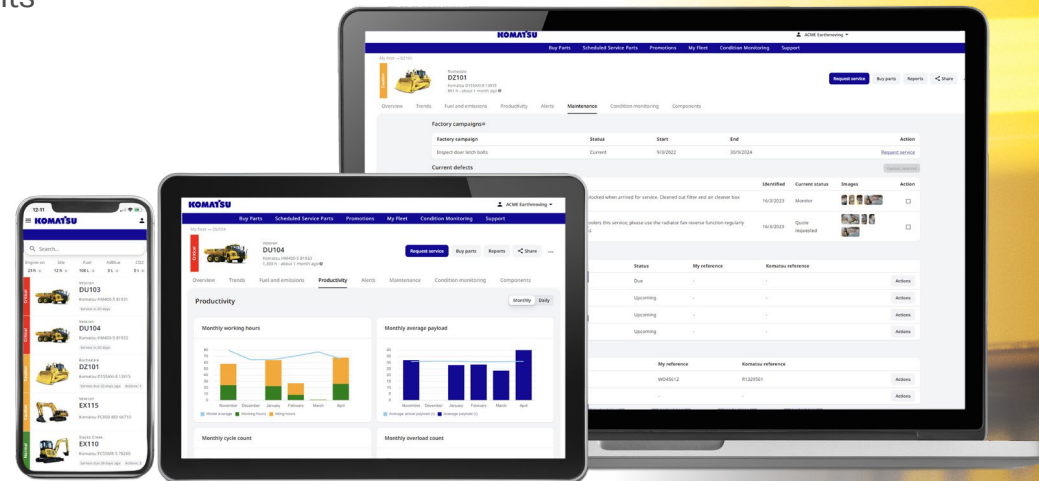
When you visit myFleet, you can view your fleet of machines, and intuitively access all your machine's data in the one location.

With myFleet, you can:

- View all machine data in one location
- Visualise and manage your fleet of machinery
- See an overall machine health indicator
- Request services from Komatsu

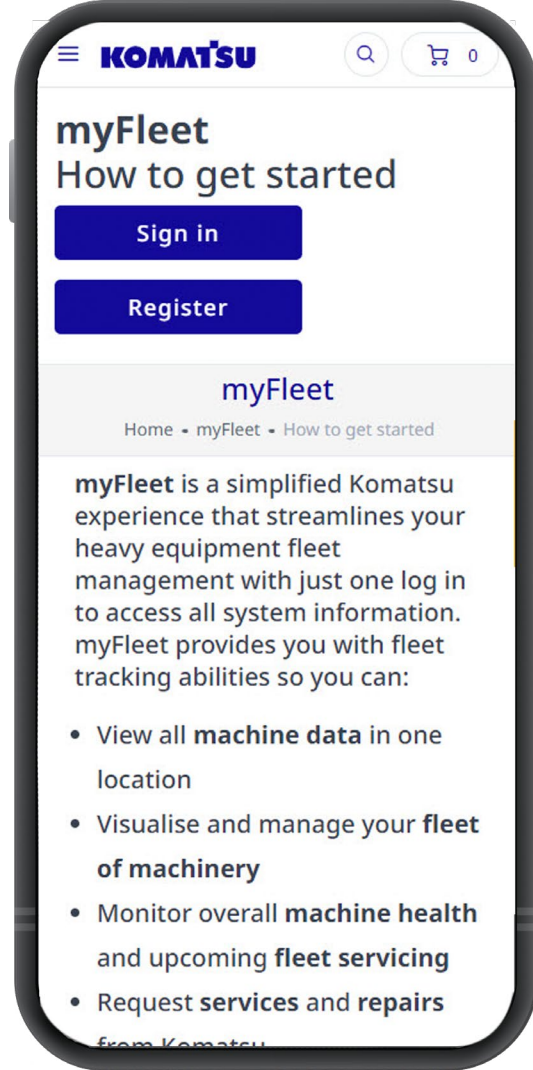
Who can use myFleet?

Komatsu customers with existing trading accounts can easily access myFleet by registering for a Premium Online Account, and then enrolling for myFleet. You can then manage your fleet and access machine information through the web dashboard.

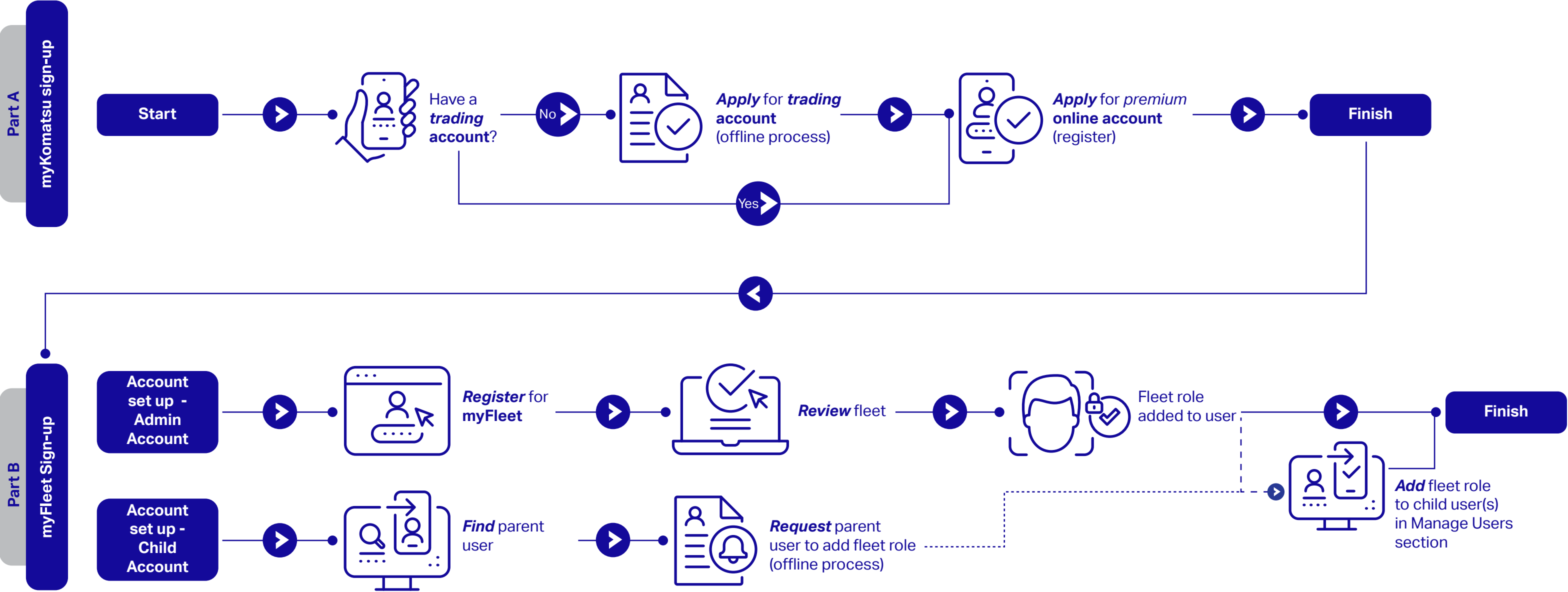


Getting started

If you already have a trading account with Komatsu, it's simple to access myFleet through my.komatsu.com.au or my.komatsu.co.nz



To access myFleet scan the QR code



Why use myFleet?



Fleet management

Easily monitor the location of all the machines in your fleet through user-friendly sorting and filtering and keep track of your fleet's overall health score. Quickly see a comprehensive list of your machines and modify fleet numbers or update hours.

myFleet also enables you to understand the health of your machines, so you can anticipate any required maintenance or services, keep track of any critical repairs that need to be actioned for your fleet, and request a service booking directly through the system



View service information

With myFleet, keeping track of your machine maintenance has never been easier. Check upcoming services, view service history and completed condition reports, mark a service as complete or purchase service kits all from one convenient platform.



Requests for service

myFleet allows you to request a service with our qualified Komatsu service technicians directly through the platform. Select your preferred date and location, and our Komatsu team will be in contact to confirm your service.



One stop shop

myFleet allows you to have one single login to access both myFleet and myKomatsu. With the one login, you can view consolidated data from systems like Komtrax and Condition Monitoring (CMS), giving you a holistic view of all your important fleet information.



Access on the go

Access myFleet anywhere, any time you have an internet connection, through the easy-to-use website dashboard on mobile, tablet or desktop.



Seamlessly access and visualise machine data to optimise your operation with myFleet

i For more information, visit my.komatsu.com.au/my-fleet or my.komatsu.co.nz/my-fleet

Product designs, specifications and/or data in this document are provided for informational and illustrative purposes only and are not warranties of any kind. Product designs and/or specifications may be changed at any time without notice. Any applicable warranties that may be provided by Komatsu for the products and services are available on request.

Komatsu and other trade marks and service marks used herein are the property of Komatsu Ltd., Komatsu Australia Pty Ltd, Komatsu America Corp., Komatsu Mining Corp., or one of their affiliates, or the respective owners or licensees.

KOMATSU

my.komatsu.com.au/my-fleet
my.komatsu.co.nz/my-fleet

